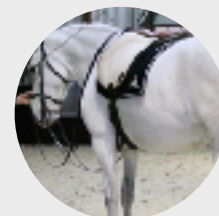


# Clarence Valley

Working Equitation Club  
15 & 16 AUGUST 2020

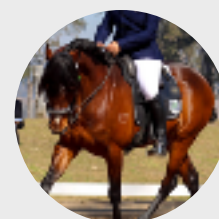


**How do you enter?**

[www.nominate.com](http://www.nominate.com)

**Costs:**

\$10 Practice per horse. Comp fees on Nominate.



**Enquiries:**  
**Terri Campbell**  
0423 570085

**Facebook:**  
ClarenceValleyWork



ingEquitation

## Saturday Training Day 15 & 16 Comp Hawthorne Park, South Grafton

Obstacles Practice & AGM & Club Monthly Meeting.

- Do you need to spend a morning introducing your horse to the sport of Working Equitation?
- Keen to test yourself and horse on a competition day?
- Do you need to see all your Working Equitation friends again?

**1**

**ENTER**

[www.nominate.com](http://www.nominate.com)

**2**

**RIDE**

Practice from 8am.

**3**

**MEETING**

AGM & General CVWE Meeting from 12. Free sausage sizzle for members.